

Tomba Romba

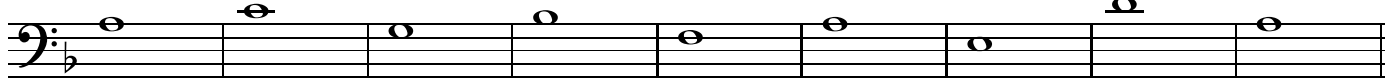
© Tim Berens, 1999

Bass $\text{♩} = 190$



f

10



19



f

27



32 A⁷

Dm

Gm



37 Cm⁷

F⁹

B^bmaj⁷

E^bmaj⁷

Em^{7b5}



42

E^b7^{b5}

Dm



47 Gm

A⁷

Dm

Gm



52

C⁹

Cm⁷

F⁹

B^bmaj⁷

E^bmaj⁷



57 Em^{7b5} E^b7b5 Dm B Gm

62 F/A B^bmaj7 F/A Gm⁷ C⁹ Fmaj⁷

68 D^{7b9} Gm⁷ F/A B^bmaj7 E^bmaj7 Em^{7b5}

74 E^bb5 C Dm Gm

80 A⁷ Dm Gm C⁹

85 Cm⁷ F⁹ B^bmaj7 E^bmaj7

89 Em^{7b5} E^b7b5 Dm

93 D Solo Interlude

102

109

113 **E** Solos
Dm

Bass
Gm

A⁷

Dm

118

Gm

C⁹

Cm⁷

F⁹

123 B^bmaj⁷

E^bmaj⁷

Em^{7b5}

E^b7^{b5}

128

Dm

Gm

A⁷

133 Dm

Gm

C⁹

Cm⁷

138 F⁹

B^bmaj⁷

E^bmaj⁷

Em^{7b5}

E^b7^{b5}

143 Dm

Gm

F/A

B^bmaj⁷

148 F/A

Gm⁷

C⁹

Fmaj⁷

D^{7b9}

153 Gm⁷

F/A

B^bmaj⁷

E^bmaj⁷

Em^{7b5}

158

E^b9^{b5}

Dm

163 Gm A⁷ Dm Gm



168 C⁹ Cm⁷ F⁹ B^bmaj⁷ E^bmaj⁷



173 Em^{7b5} E^{b7b5} Dm



177 **F** Gm F/A B^bmaj⁷ F/A Gm⁷ C⁹



183 Fmaj⁷ D^{7b9} Gm⁷ F/A B^bmaj⁷ E^bmaj⁷



189 Em^{7b5} E^{b9b5} Dm



195 Gm A⁷ Dm Gm



200 C⁹ Cm⁷ F⁹ B^bmaj⁷ E^bmaj⁷



205 Em^{7b5} E^{b7b5} **G**



212

