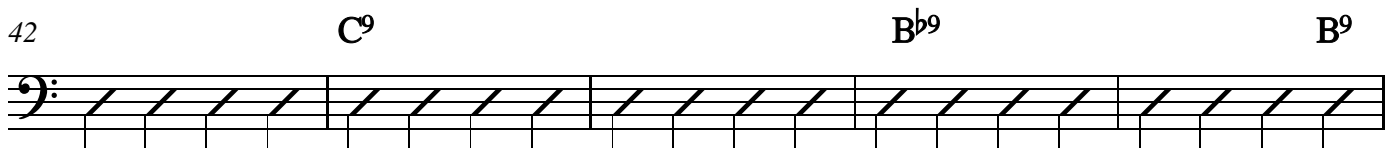
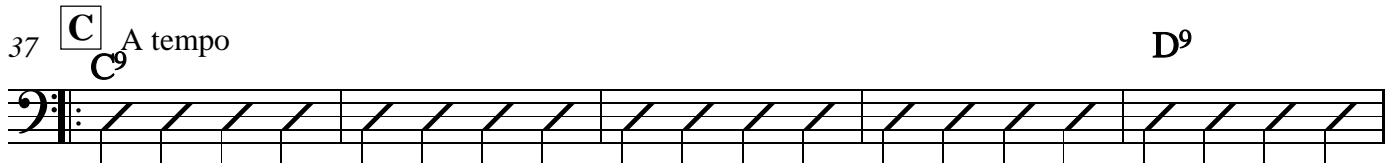
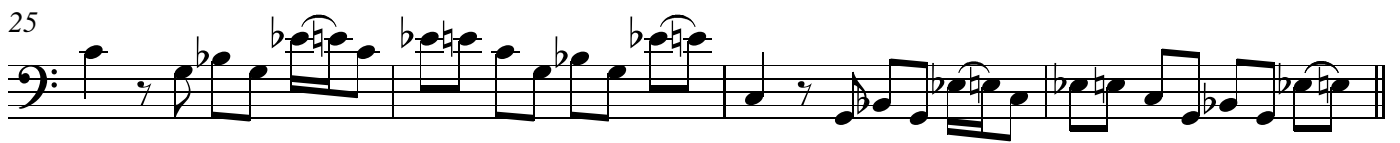
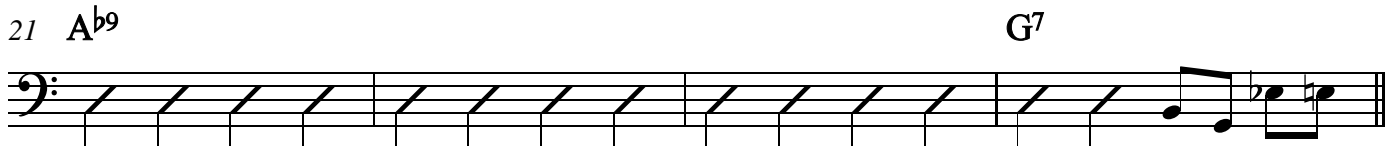
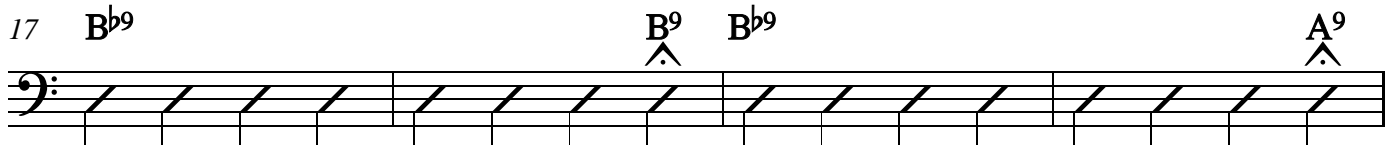


# Nortonomy

© Tim Berens, 2000

Bass

$\text{♩} = 76$



2

47 B<sup>b9</sup>

A<sup>9</sup> A<sup>b9</sup> Bass

A single bass staff containing five measures of music, each measure filled with a series of diagonal slurs, indicating a rhythmic pattern or a specific performance instruction.

52 G<sup>7#9</sup>

D

A single bass staff containing four measures of music. The first measure is a whole note chord. The following three measures contain eighth-note patterns with slurs, indicating a specific rhythmic figure.

56

A single bass staff containing four measures of music, continuing the eighth-note patterns with slurs from the previous system.

60

A single bass staff containing four measures of music, continuing the eighth-note patterns with slurs.

64

B<sup>b9</sup>

B<sup>9</sup> B<sup>b9</sup>

A<sup>9</sup>

A single bass staff containing five measures of music. The first measure has a chord. The next three measures are slurs. The final measure has a chord with an accent (^) above it.

69 A<sup>b9</sup>

G<sup>7</sup>

A single bass staff containing four measures of music. The first three measures are slurs, and the fourth measure contains a chord.

73

*molto rit.*

Cadenza

A single bass staff containing four measures of music. The first three measures contain eighth-note patterns with slurs. The final measure is a whole note chord with a fermata above it.